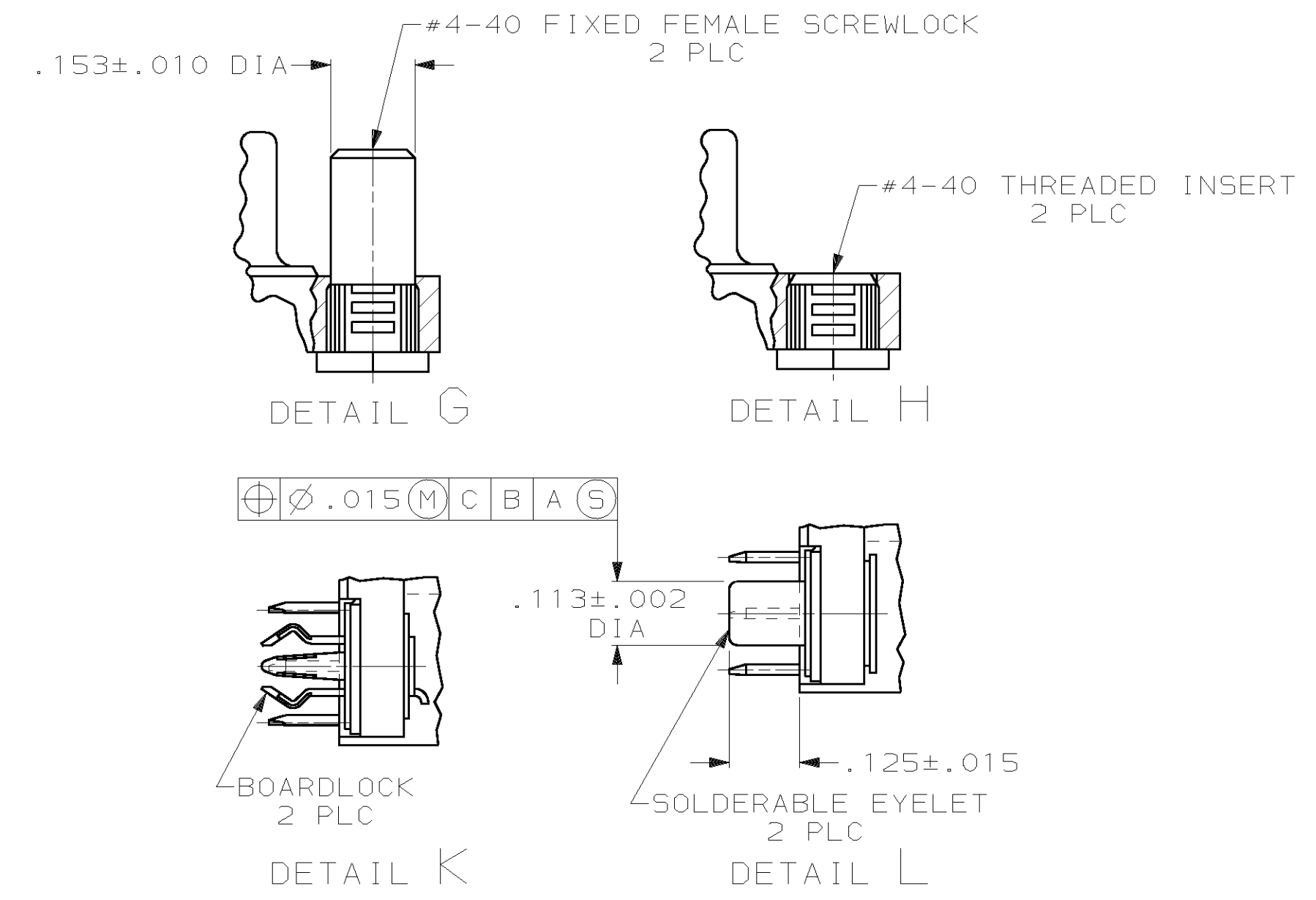
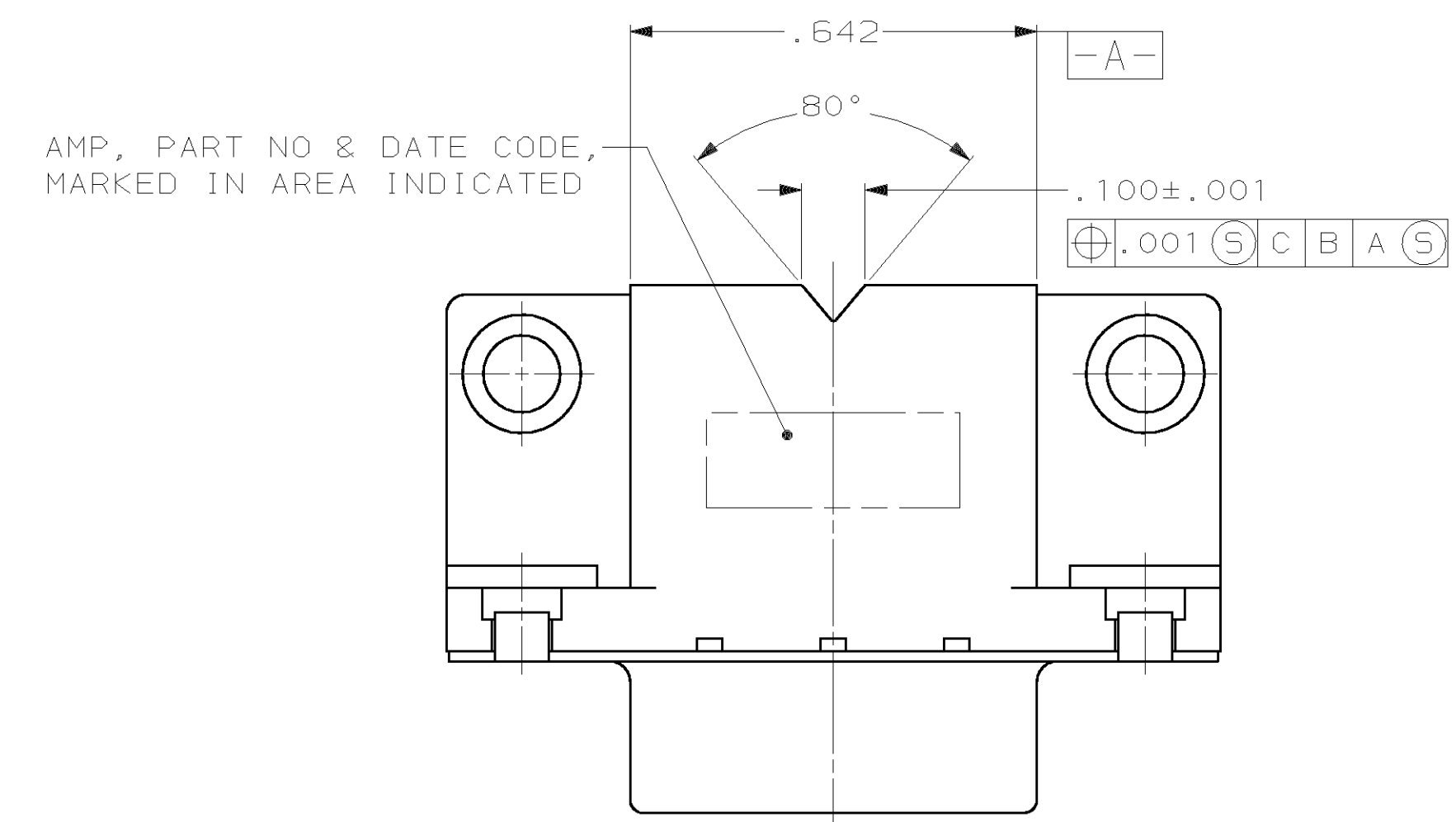
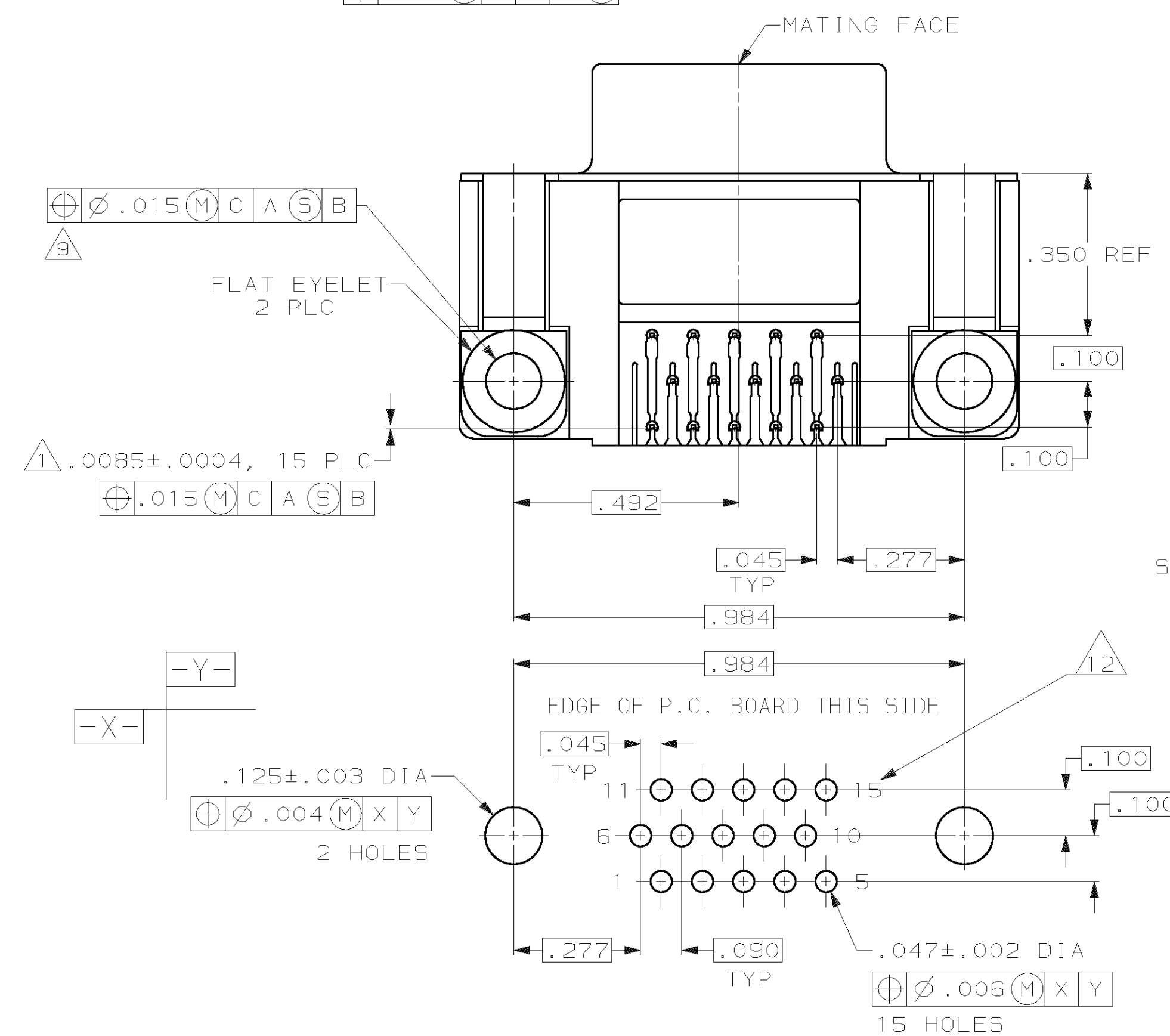
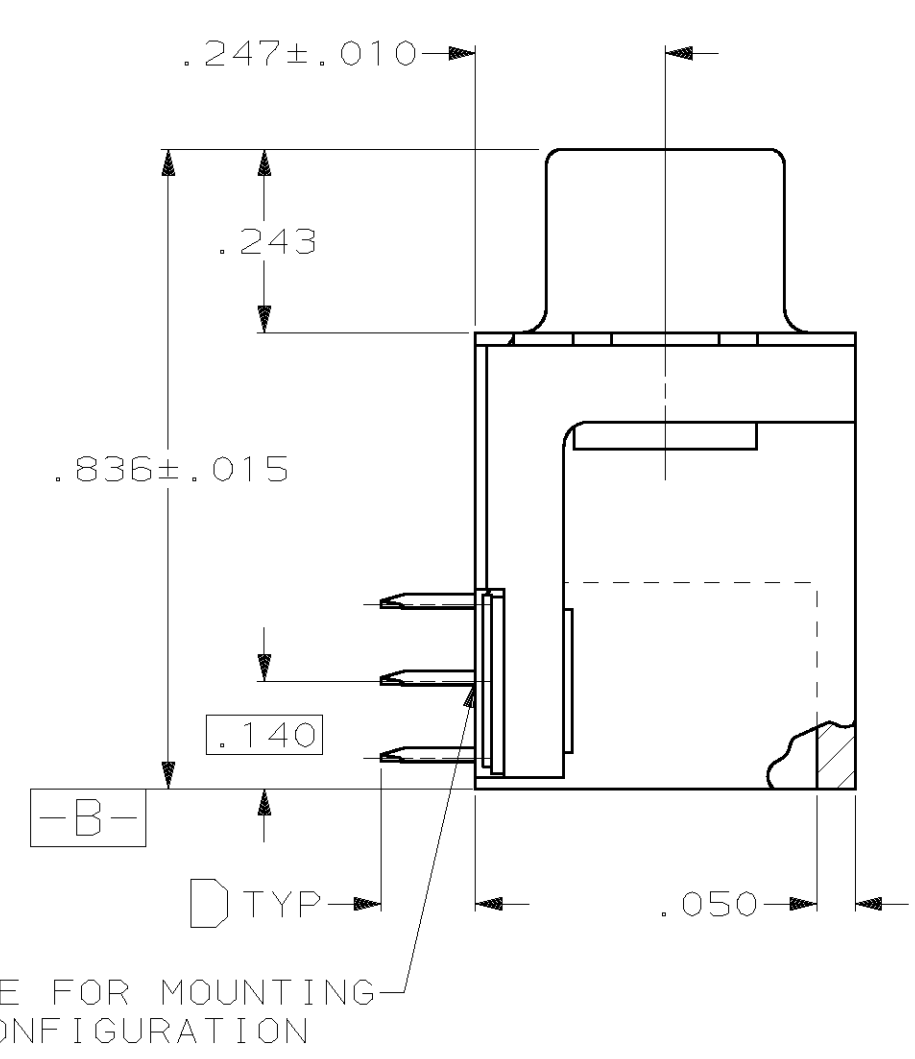
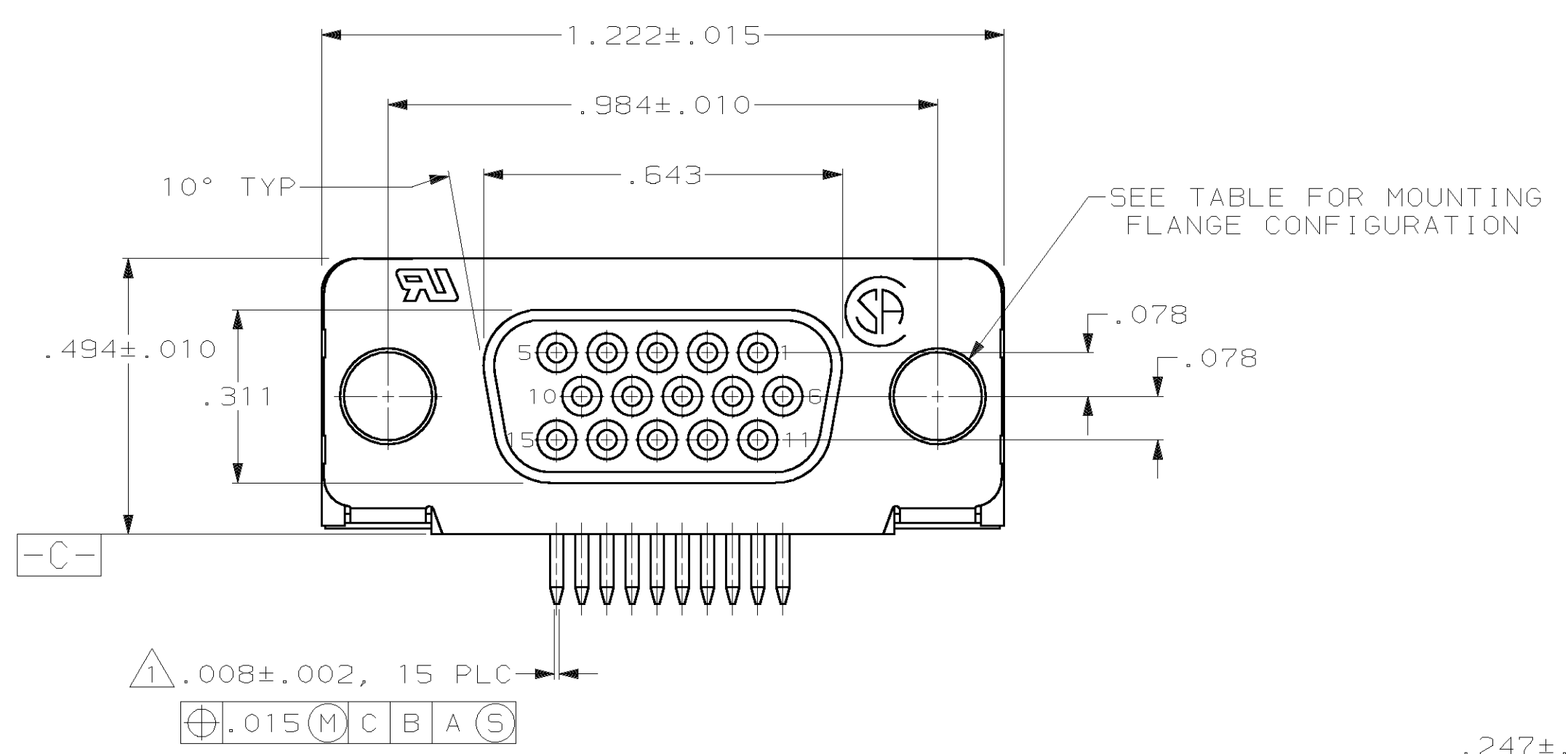


REVISONS		DATE	APPD
LOC	DIST	DESCRIPTION	
BD	77	ADDED 4--2 PER EC 0020-91-96	06 FEB 96 RLT
		SUPSD -14, -15, -19, -20 & OBS -18 PER EC 0020-493-96	14 JAN 97 RT
		ADDED -43 PER EC 0640-16-99	04 FEB 99 JK



- △ POSITION TOLERANCE APPLIES AT TIP ONLY.
- △ NYLON, 94 V-0 RATED, BLACK.
- △ PH05. BRONZE PER QQ-B-750.
- △ STEEL PER ASTM A109.
- △ FLAT EYELETS & SOLDERABLE EYELETS: BRASS; BOARDLOCKS: COPPER ALLOY; INSERTS & SCREWLOCKS: ZINC.
- △ GOLD PLATING PER MIL-G-45204, NICKEL PLATING PER QQ-N-290, TIN PLATING PER MIL-T-10727.
- △ BRIGHT TIN PLATED.
- △ FLAT EYELETS: BRIGHT TIN PLATED; SOLDERABLE EYELETS & BOARDLOCKS: TIN-LEAD PLATED; SCREWLOCKS: CLEAR CHROMATE; INSERTS: CLEAR CHROMATE.
- △ POSITION TOLERANCE APPLIES TO .125 DIA HOLE OR TO DIAMETER ESTABLISHED BY LEGS OF BOARDLOCK.
- △ PLATED WITH GOLD (SEE TABLE FOR THICKNESS) ON MATING END, .000120 MIN TIN-LEAD ON SOLDER END, ALL OVER .000050 MIN NICKEL.
- △ PART NO INCLUDES BULK PACKED SCREWLOCKS.
- △ POSITION NUMBERS SHOWN FOR REFERENCE ONLY.
- 13. THIS CONNECTOR IS RATED TO A TEMPERATURE OF 220° C MAX AND 90 SECOND MAXIMUM EXPOSURE TIME.



	TUBE SPECIAL	.125±.020	DETAIL K	DETAIL G	.000030 MIN	4-748390-3
	TRAYS	.085±.010	DETAIL K	DETAIL G	.000030 MIN	4-748390-2
	-	.085±.010	DETAIL K	DETAIL H	FLASH	4-748390-1
	TUBES	.125±.020	DETAIL K	DETAIL H	.000030 MIN	3-748390-9
	-	.085±.010	DETAIL K	DETAIL H	.000030 MIN	3-748390-8
	-	.105±.010	DETAIL K	DETAIL H	.000030 MIN	3-748390-7
	-	.125±.020	DETAIL K	DETAIL H	FLASH	3-748390-6
	-	.125±.020	DETAIL K	DETAIL G	.000020 MIN	3-748390-5
	-	.125±.020	DETAIL K	DETAIL H	.000020 MIN	3-748390-4
	-	.125±.020	.125 DIA HOLE	DETAIL H	.000020 MIN	3-748390-3
	-	.125±.020	.125 DIA HOLE	DETAIL H	.000020 MIN	3-748390-2
	-	.125±.020	DETAIL K	DETAIL G	.000015 MIN	3-748390-1
	-	.125±.020	.125 DIA HOLE	DETAIL G	.000015 MIN	3-748390-0
	-	.125±.020	DETAIL K	DETAIL H	.000015 MIN	2-748390-9
	-	.125±.020	.125 DIA HOLE	DETAIL H	.000015 MIN	2-748390-8
	-	.125±.020	DETAIL K	DETAIL G	.000010 MIN	2-748390-7
	-	.125±.020	.125 DIA HOLE	DETAIL G	.000010 MIN	2-748390-6
	-	.125±.020	DETAIL K	DETAIL H	.000010 MIN	2-748390-5
	-	.125±.020	.125 DIA HOLE	DETAIL H	.000010 MIN	2-748390-4
	-	.125±.020	DETAIL K	DETAIL G	FLASH	2-748390-3
	-	.125±.020	.125 DIA HOLE	DETAIL G	FLASH	2-748390-2
	-	.125±.020	.125 DIA HOLE	DETAIL H	FLASH	2-748390-1
	-	.125±.020	.125 DIA HOLE	DETAIL G	.000030 MIN	2-748390-0
	-	.125±.020	.125 DIA HOLE	DETAIL H	.000030 MIN	1-748390-9
	-	.125±.020	DETAIL L	DETAIL G	FLASH	1-748390-8
	-	.125±.020	DETAIL L	DETAIL H	FLASH	1-748390-7
	-	.125±.020	DETAIL L	DETAIL G	.000010 MIN	1-748390-5
	-	.125±.020	DETAIL L	DETAIL H	.000030 MIN	1-748390-4
	-	.125±.020	DETAIL K	DETAIL G	FLASH	1-748390-2
	-	.125±.020	DETAIL K	DETAIL H	FLASH	1-748390-1
	-	.125±.020	DETAIL K	DETAIL G	.000030 MIN	748390-6
	-	.125±.020	DETAIL K	DETAIL H	.000030 MIN	748390-5
	PACKAGING		MOUNTING LEG CONFIGURATION	MOUNTING FLANGE CONFIGURATION	CONTACT MATING END GOLD THICKNESS	PART NO

P.C. BOARD MOUNTING DIMENSIONS  
 (.062 PC BOARD THICKNESS FOR SOLDERABLE EYELETS & BOARDLOCKS)  
 (.093 MAX PC BOARD THICKNESS WITHOUT SOLDERABLE EYELETS & BOARDLOCKS)

DO NOT SCALE PRINT. UNLESS SPECIFIED DIMENSIONS IN INCHES TOLERANCES ON:

DR 1-27-88 C.RICHARD	CHK 1-29-88 S.WELDON	NAME
APPD 1-29-88 P.KISSINGER	APPD 2-1-88 C.RHODE	RECEPTACLE ASSY, SIZE 1, 15 POSN, RIGHT ANGLE, FRONT METAL SHELL, AMPLIMITE® HD-22
MATERIAL MOLDED PARTS: △ CONTACTS: △ SHELL: △ HARDWARE: △	PRODUCT SPEC 108-1092	SIZE D
FINISH CONTACTS: △ SHELL: △ HARDWARE: △	APPLICATION SPEC 114-40021	FSCM NO 00779
	WEIGHT -	DRAWING NO 748390
		SCALE 4:1
		SHEET 1 OF 1

AMP | AMP INCORPORATED  
 Harrisburg, Pa. 17105