

D-SUB H.D. Right Angle Type

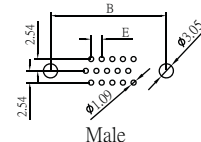
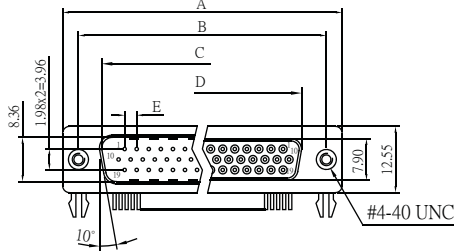
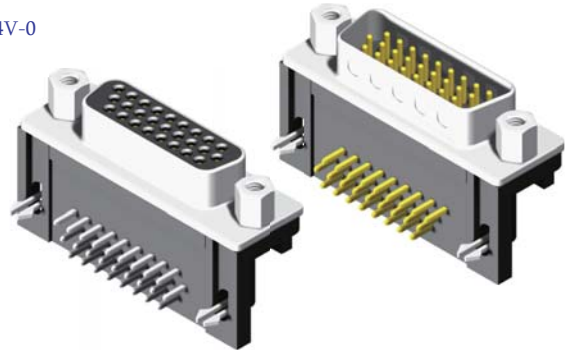
Specifications

Current Rate: 3 AMP
 Insulation Resistance: 1000MΩ Min.
 Contact Resistance: 30mΩ Max.
 Dielectric Voltage: 500V AC for one minute
 Operation Temperature: -55°C to +105°C

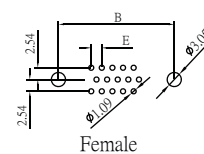
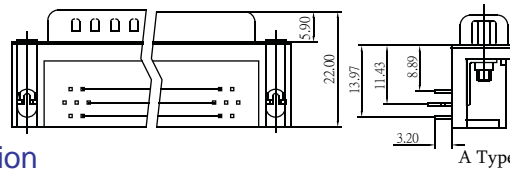
Material

Insulator: Polyester, UL 94V-0
 © Standard: PBT
 Terminal: Copper Alloy

No. of Contacts	Dim. A	Dim. B	Dim. C	Dim. D	Dim. E
15	30.81	24.99	16.92	16.33	2.29
26	39.14	33.32	25.50	24.66	2.29
44	53.04	47.04	38.96	38.38	2.29
62	69.32	63.50	55.42	54.84	2.41



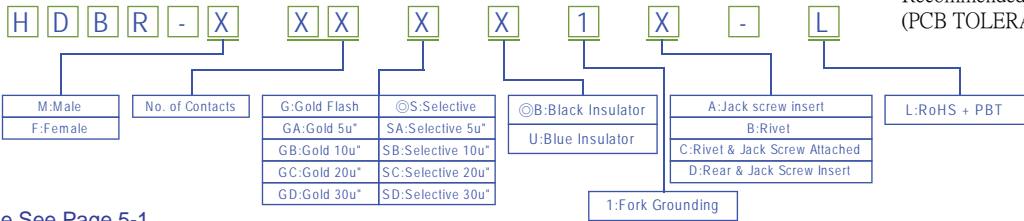
Male



Female

Recommended PCB Layout
 (PCB TOLERANCE ±0.05)

Order Information



Type See Page 5-1

D-SUB H.D. Dual Port Right Angle Type

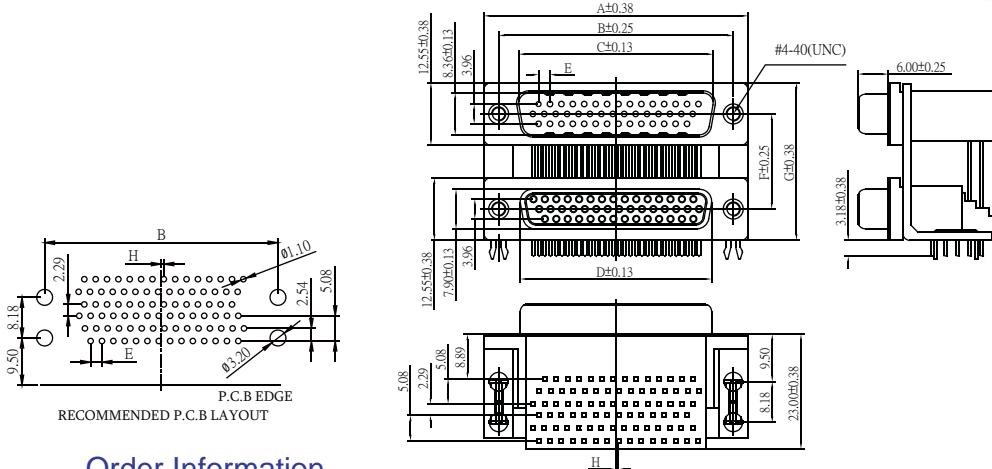
Specifications

Current Rate: 3 AMP
 Insulation Resistance: 1000MΩ Min.
 Contact Resistance: 20mΩ Max.
 Dielectric Voltage: 500V AC for one minute
 Operation Temperature: -55°C to +105°C

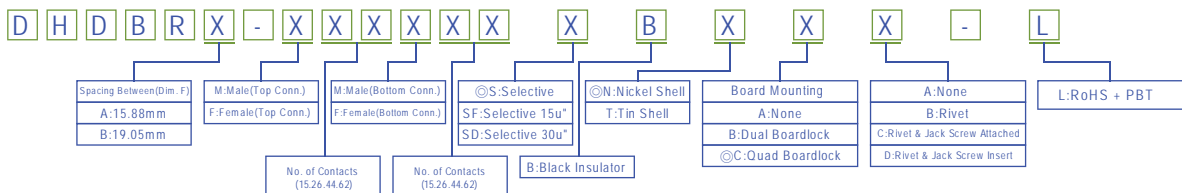
Material

Terminal: Copper Alloy.
 © Insulator: PBT UL 94V-0 Rated.

No. of Contacts	Dim. A	Dim. B	Dim. C	Dim. D	Dim. E	Dim. F	Dim. G	Dim. H
15	30.81	24.99	16.92	16.33	2.29	15.88	28.40	0.25
26	39.14	33.32	25.50	24.66	2.29			0.51
44	53.04	47.04	38.96	38.38	2.29			0.51
62	69.32	63.50	55.42	54.84	2.41	19.08	31.60	0.58



Order Information



© Standard Recommended

D-SUB High Density

RoHS