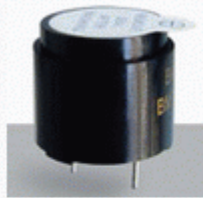


Electro-magnetic Transducer

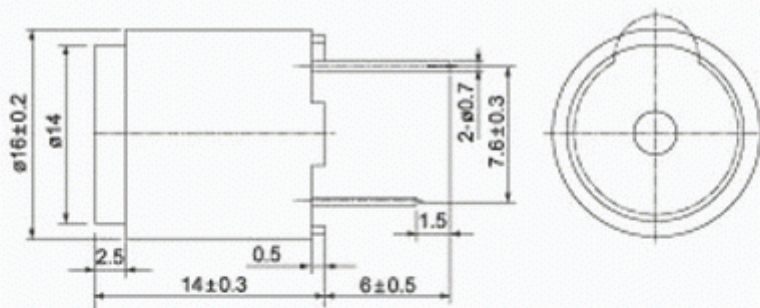
Shape



Type	BMT1606XH14	BMT1612XH14
Rated Voltage	6V _{DC}	12V _{DC}
Operating Voltage	4...8V _{DC}	8...15V _{DC}
a)Sound Output Level at 10cm		min. 85dB
a)Rated Current		Max. 30mA
a)Resonant Frequency		2300 ± 300Hz
Operating Temperature		-25...+70 °C
Storage Temperature		-30...+80 °C
Weight		7g

a)Value applying rated voltage.

Dimension



Characteristic

