

6

5

4

3

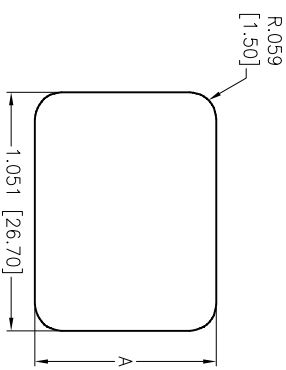
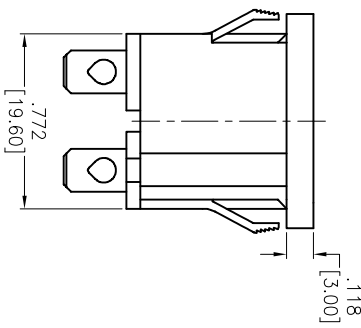
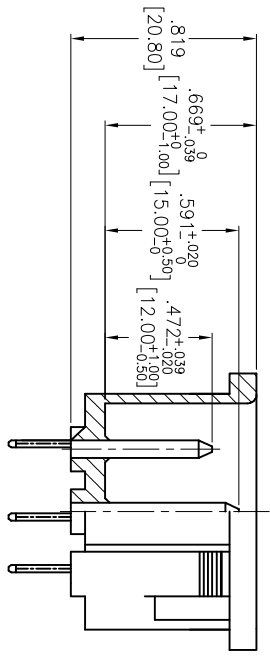
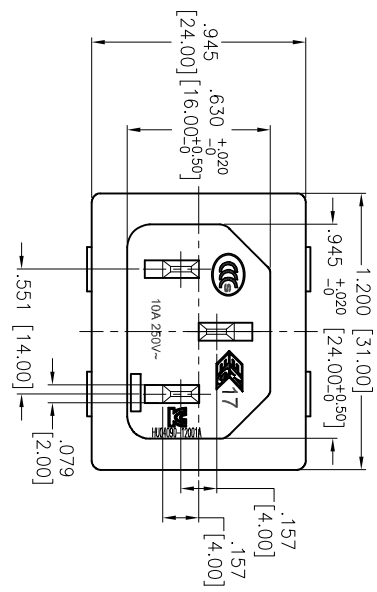
2

1

APPROVED: _____

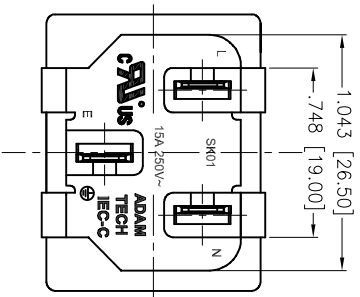
DATE: _____ TITLE: _____

Rev	AWO #	Description	Date	Appr
-		RELEASED	6/16/05	
A		REDRAWN	01/23/13	
B		REVISED DIM.	03/27/13	
C		REVISED SHAPE	9/6/13	AY



PANEL THICKNESS	DIMENSIONS
.031-.047 [0.80-1.20]	.799 [20.30]
.051-.079 [1.30-2.00]	.807 [20.50]

RECOMMENDED PANEL CUT



TERMINAL OPTIONS				
-1	-2	-3	-5	
.187 Q.C.	.250 Q.C.	.157 Solder	.098 Solder	

ADAM TECH

909 Rahway Avenue, Union, NJ 07083
 Phone: 908-687-5000 Fax: 908-687-5710

IEC MALE INLET, SNAP-IN PANEL MOUNT

SPECIFICATIONS:
 Material: Insulator: Nylon 66, rated UL 94V-0
 Insulator color: Black
 Contacts: Copper Alloy
 Plating: Tin over Copper underplate overall
 Electrical: Current rating: C-ULus: 15A @ 250V
 ENEC & CCC & KC: 10A @250V
 Insulation resistance: 100 Mohms min @ 500 VDC
 Dielectric withstanding voltage: 3,000 VAC for 1 minute
 Environmental: Lead free, RoHS compliant



UNLESS OTHERWISE SPECIFIED
 ALL DIMENSIONS ARE INCHES [MM]
 TOLERANCES: EXCEPT AS NOTED
 INCHES: .X ± .10 Ø.XX ± .015
 .XX ± .020 Ø.XXX ± .010
 .XXX ± .015

APPROVALS	DATE
DRAWN SS	6/16/05
CHECKED	
APPROVED	

SIZE	PART NO.	REV.
X	IEC-C-X	C

REF: S00087C SCALE: NTS SHEET 1 OF 1

6

5

4

3

2

1