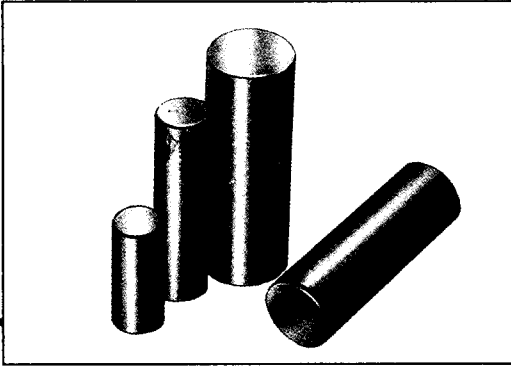
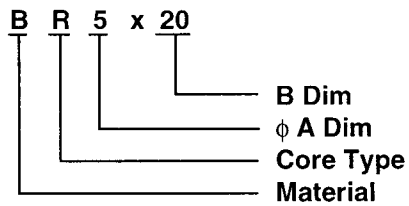


ROD CORES / R TYPE



R TYPE is mainly used as the magnetic cores of the coils which do not require adjustments as well as magnetic shield.

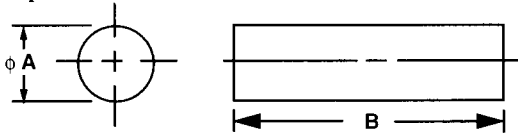
1. Ordering Code.



2. Material.

B B246 D2 D1

3. Shapes.



CORES	ϕ A m/m	ϕ B m/m
R 2X4	2 ± 0.2	4 ± 0.3
R 2X8	2 ± 0.2	8 ± 0.3
R 2X10	2 ± 0.2	10 ± 0.3
R 3X8	3 ± 0.2	8 ± 0.3
R 3X10	3 ± 0.2	10 ± 0.3
R 3X12	3 ± 0.2	12 ± 0.3
R 4X10	4 ± 0.2	10 ± 0.3
R 4X12	4 ± 0.2	12 ± 0.3
R 4X15	4 ± 0.2	15 ± 0.4
R 4X19	4 ± 0.2	19 ± 0.4
R 5X15	5 ± 0.3	15 ± 0.4
R 5X20	5 ± 0.3	20 ± 0.5
R 6X15	6 ± 0.3	15 ± 0.4
R 6X20	6 ± 0.3	20 ± 0.5
R 6X25	6 ± 0.3	25 ± 0.5
R 6X30	6 ± 0.3	30 ± 0.8
R 6.34X25.4	6.34 ± 0.3	25.4 ± 0.5
R 8X15	8 ± 0.4	15 ± 0.4
R 8X20	8 ± 0.4	20 ± 0.5
R 8X30	8 ± 0.4	30 ± 0.8
R 10X20	10 ± 0.4	20 ± 0.5
R 10X30	10 ± 0.4	30 ± 0.8