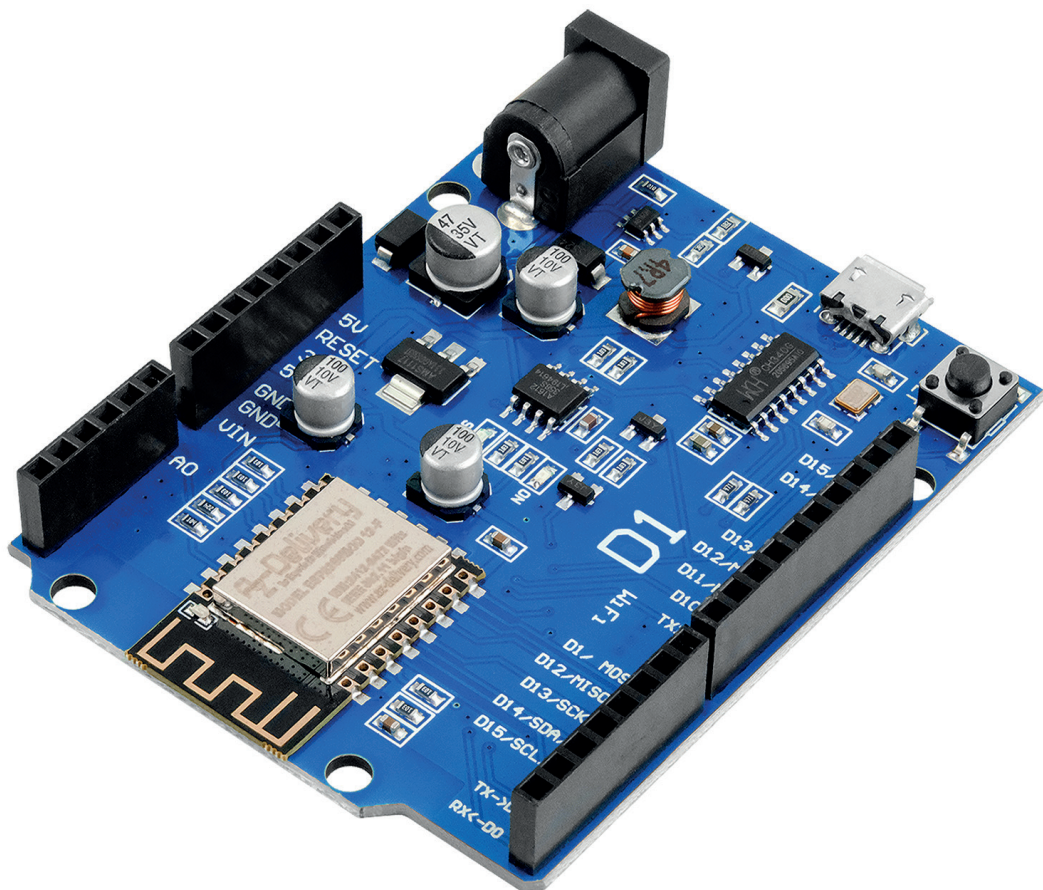


D1 Board NodeMCU ESP8266MOD-12F WiFi Wlan Modul Datenblatt



Content:

[1. Specifications](#)

[2. Features](#)

[3. Pinout](#)

1. Specifications

Operating voltage	3.3V
Main chip	ESP8266-12F
Clock speed	80MHz / 160MHz
Flash	4MB
Digital I/O pins	11
Analog input pins	1
Analog input voltage range	from 0V to 3.3V
USB port	microUSB
USB chip	CH340C
Antenna	Ceramic (on-board), External connector
Dimensions	25x35x6mm [0.98x1.4x0.24in]

2. Features

- 802.11 b/g/n
- Integrated low power 32bit MCU
- Integrated 10bit ADC
- Integrated TCP/IP protocol stack
- Integrated TR switch, balun, LNA, power amplifier and matching network
- Integrated PLL, regulators, and power management units
- Wi-Fi 2.4GHz, support WPA/WPA2
- Support STA/AP/STA + AP operation modes
- Support Smart Link Function for both Android and iOS devices
- SDIO2.0, (H)SPI, UART, I2C, I2S, IRDA, PWM, GPIO• STBC, 1x1 MIMO, 2x1 MIMO
- A-MPDU & A-MSDU aggregation and 0.4s guard interval
- Deep sleep power < 10 μ A, Power down leakage current < 5 μ A
- Wake up and transmit packets in < 2ms
- Standby power consumption of < 1.0mW (DTIM3)
- +20dBm output power in 802.11b mode
- Operating temperature range -40 ° C - 125 ° C

