

REFER TO PAGE 6 FOR PART DIMENSIONS

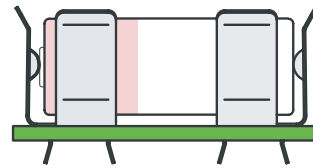
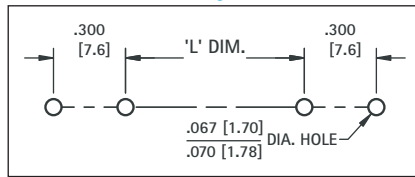
NOTE: ALL MOUNTING DIMENSIONS ARE FOR REFERENCE ONLY. VERIFY YOUR BATTERY LAYOUT PRIOR TO FABRICATION.

FIGURE 5



82
92
2915

Mounting Detail



52

CAT. NO.	L DIMENSION		
	For "AAA"	For "N"	For 12 VOLT
82 with 82	1.080 (27.4)	.510 (13.0)	.450 (11.4)

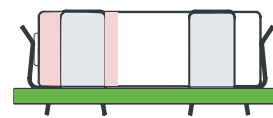
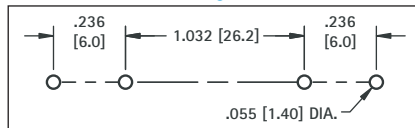
CAT. NO.	L DIMENSION						
	For "A"	For "4/5A"	For "2/3A"	For "1/2A"	For "AA"	For "4/5AA"	For "1/2AA"
52 with 52	1.120 (28.5)	1.020 (25.9)	.645 (16.4)	.300 (7.6)	1.320 (33.5)	1.020 (25.9)	.300 (7.6)
92 with 92	1.120 (1.12)	1.020 (25.9)	.645 (16.4)	.300 (7.6)	1.320 (33.5)	1.020 (25.9)	.300 (7.6)
2915 with 2915	1.120 (1.12)	1.020 (25.9)	.645 (16.4)	.300 (7.6)	1.320 (33.5)	1.020 (25.9)	.300 (7.6)

FIGURE 6



51

Mounting Detail



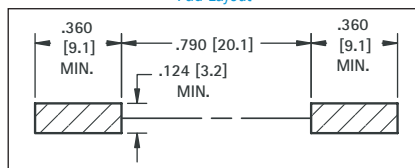
CAT. NO.	L DIMENSION
	For "AAAA"
51 with 51	1.032 (26.2)

FIGURE 7



50

Pad Layout



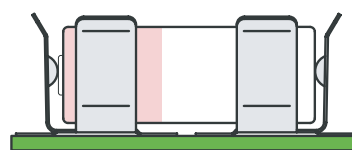
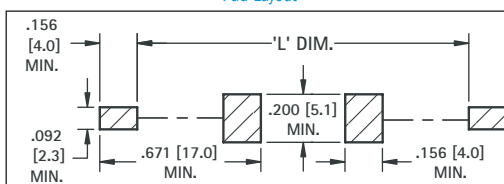
CAT. NO.	L DIMENSION
	For "AAAA"
50 with 50	1.032 (26.2)

FIGURE 8



55

Pad Layout



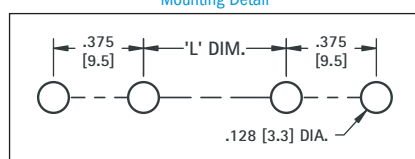
CAT. NO.	L DIMENSION		
	For "A"	For "4/5A"	For "2/3A"
55 with 55	1.880 (47.8)	1.280 (32.5)	1.220 (31.0)

FIGURE 9



206

Mounting Detail



207
208

CAT. NO.	L DIMENSION
	For "AA"
206 with 206	1.100 (27.9)

CAT. NO.	L DIMENSION
	For "C"
207 with 207	.812 (20.6)

CAT. NO.	L DIMENSION
	For "D"
208 with 208	1.250 (31.8)